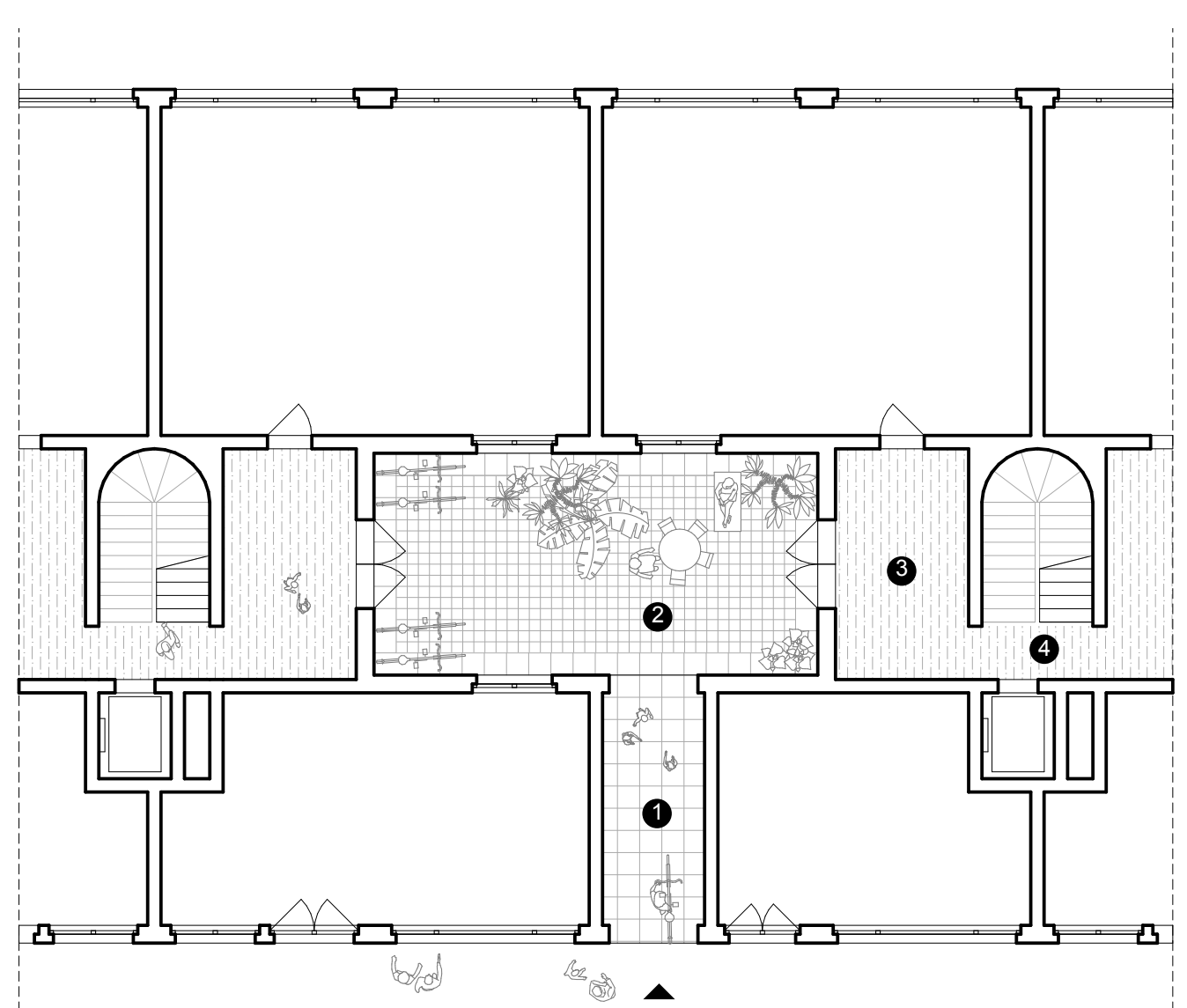


HOUSING TYPOLOGY

The proposed buildings are wide, in order to compact the built surface. The buildings have a two floor high plinth and a four floors high upper register, differentiated by a 2m setback facing the water. The aim is to turn the generally difficult lighting conditions of the wide building into a positive thing, where the

apartments offer more than usual. The good sunlight conditions are achieved with a courtyard system, formed by courtyards of 5m width and 10m length, which start on the +5.00m level, and open up on the 4th and 5th floors. In order to let more sunlight in for the lower floors.

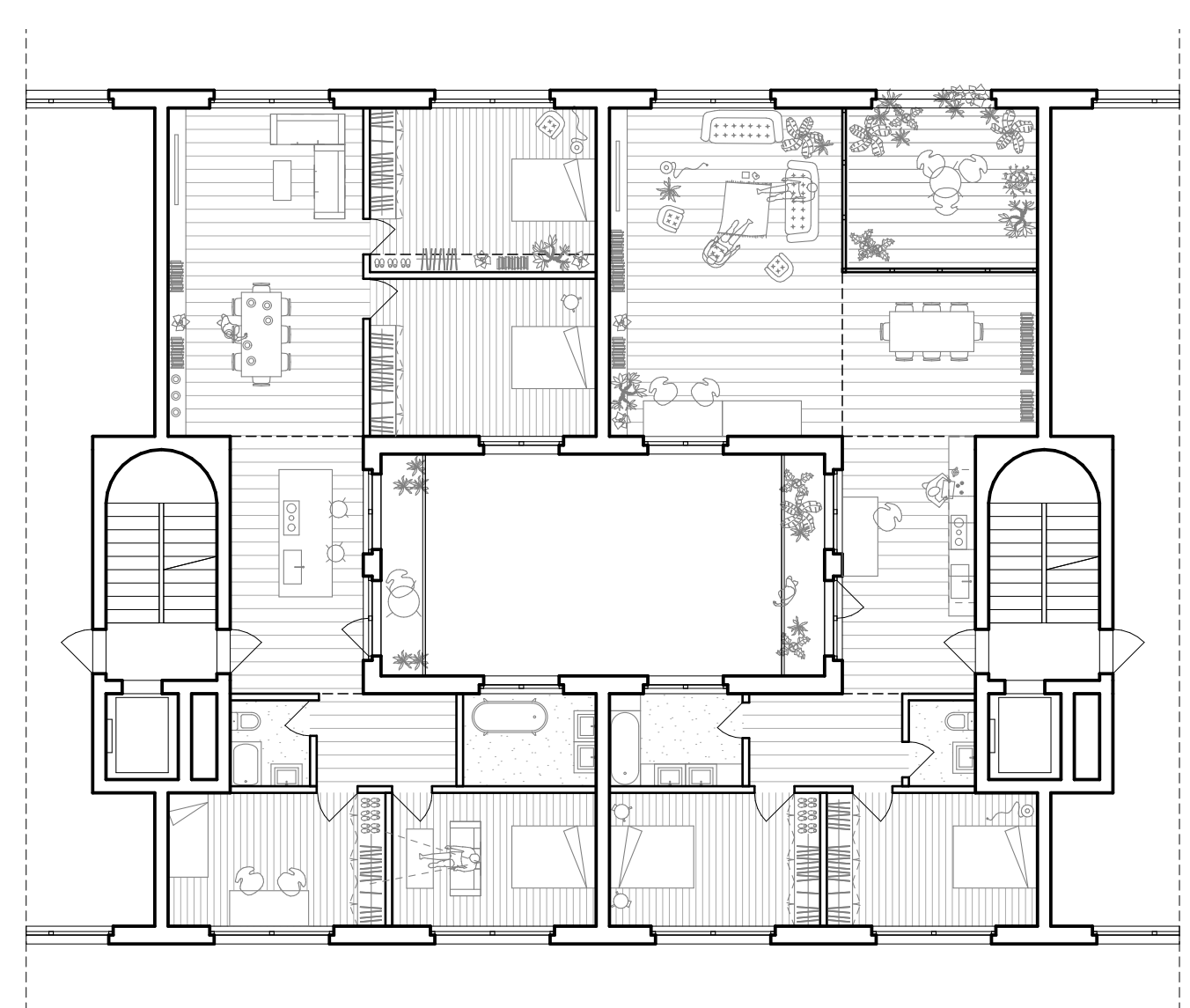


GROUND FLOOR +5

1. Passage
2. Courtyard
3. Entry Hall
4. Stair case

ACCES

The spatial sequence for entering the housing units is as follows: entrance passage, interior courtyard, entrance hall, stairs or elevator, apartment. The passing through the interior courtyard is an important part of the sequence, which enriches the spatial experience.

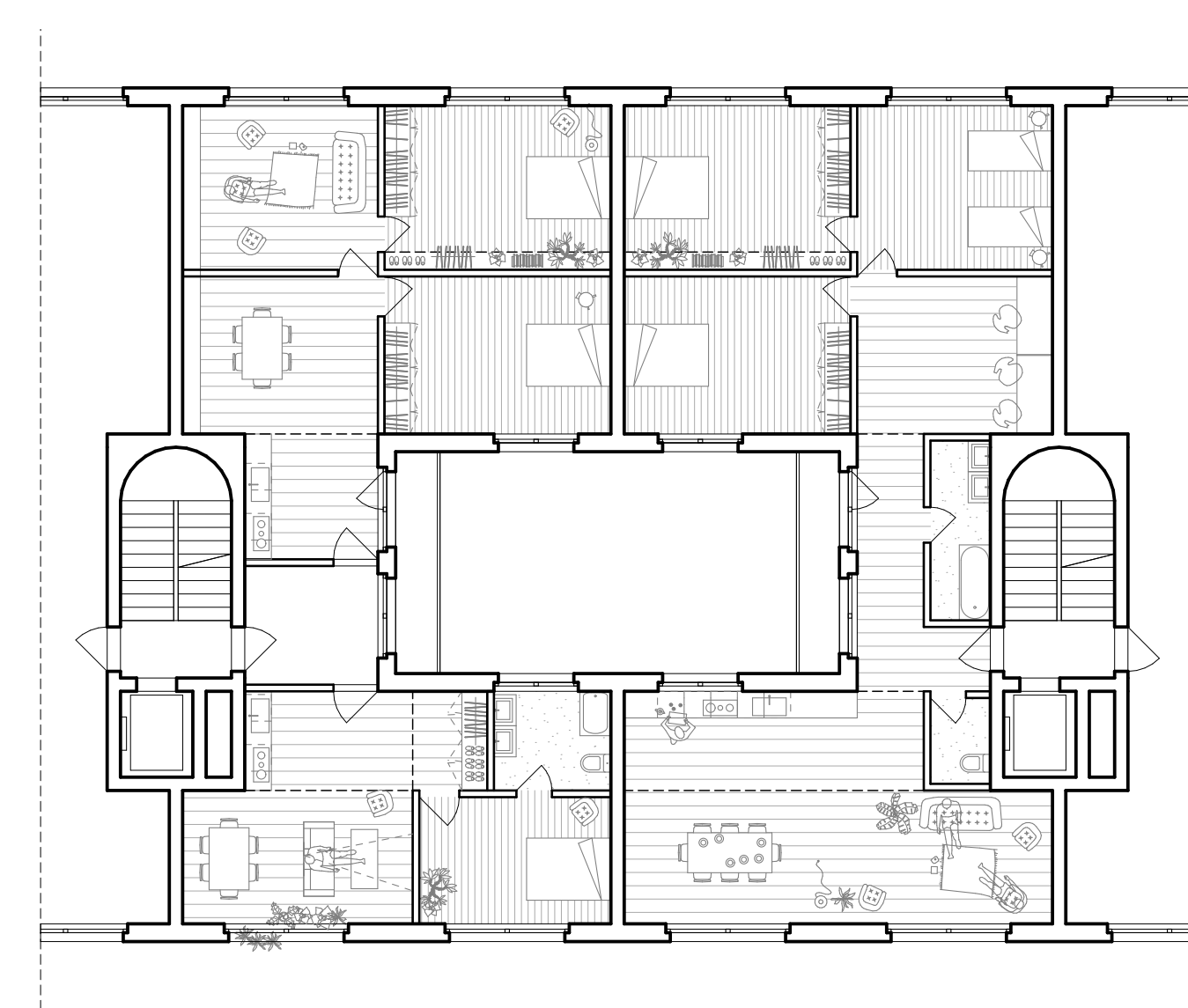


CURRENT FLOOR

2 Apartments

TPOLOGY

The typical apartments are transversal, looking in two directions (North and South) and have additional light from the interior courtyards. Therefore, instead of a banal central corridor and mono-directional apartments, the proposed buildings offer a very inspiring apartment typology, with a great variety of views and light sources.



FLEXIBLE FLOOR

4 Apartments

FEXIBILITY

The staircases serve from two to four apartments, two apartments in the typical case. Each two apartments are grouped around a courtyard. The distance between the facing windows of different apartments is 10m. The layout is flexible, as the transversal apartments can be split into two smaller units.

